



Cedar Valley Gems

Cedar Valley Rocks & Minerals Society

Cedar Rapids, Iowa

CEDAR VALLEY GEMS

MAY 2015

VOL. 41, ISSUE 5

CVRMS Field Trip to Conklin Quarry 5/17

Sunday, May 17 - CVRMS field trip, Conklin Quarry, Coralville

As happened last year, there is an attendance limit on the number of people allowed into the quarry as directed by quarry management. While the number is fairly large - please let Marv know if you plan to attend. First come - first served. Contact m_houg@yahoo.com

We will go RAIN or SHINE. Meet at the main entrance to Conklin at 8:45 a.m. to sign in and get safety instructions. Enter the quarry at 9:00 a.m. This is a lock-in quarry; that is, the gate is secured behind us and no one can enter or exit (except in an emergency) until 12:15 p.m., when a group will be let out. Others can come in at that time if they are waiting at the gate. The rest of the group will leave between 4:00 - 4:30 p.m. depending on the weather and collecting success.

Requirements are that you must be a member of the Cedar Valley Rock and Mineral Society and sign a waiver. Also we are going to be enforcing strict safety requirements such as everyone must wear a hard hat, a bright safety vest, and hard shoes (steel toe is preferred). No open toe sandals or tennis shoes will be allowed. Also long pants will be required, no shorts will be allowed. Safety glasses and gloves are recommended.

NO EXCEPTIONS TO THESE RULES.

Please stay away from the walls at all times as loose rocks and boulders do fall and walls spontaneously collapse.

This is a "hard-rock" working quarry. All field trippers must have the appropriate safety equipment. All children should be closely supervised. Possible finds include: millerite, coral heads, horn corals, brachiopods, bryozoans, trilobites,



crinoids and maybe cephalopods, fish parts, and blastoids. Useful tools include: rock hammers, cold chisels, sledges and pry bars. Bring your own water and lunch.

To save time, download and fill out the club liability waiver at www.cedarvalleyrockclub.org

Travel to I-80 in Iowa City/Coralville. The quarry entrance is just north of I-80 at exit #242 (1st Ave), across the street from the Hampton Inn parking lot.

NOTE: If you do not have the safety equipment - you will not be allowed to go in. All safety equipment will be worn at all times while in the quarry! To save time, fill out the CVRMS waiver to participate. Go to the club website, print the form and complete it in advance:

<http://www.cedarvalleyrockclub.org/Downloads/FieldTrips/Waiver.pdf>

**Next Club Meeting: May 19 @
7 p.m. Rockwell Cafeteria**

The featured speaker for the May 19 meeting will be Ray Anderson. His topic is "The rocks, minerals, and fossils of the Grotto of the Redemption, West Bend, Iowa." Jan And Dan Whetsone and Judy Suman will host the monthly meeting. As always your suggestions for future programs are welcomed.

CVRMS May Board Meeting Minutes

Members Present: Marv Houg, Dell James, Sharon Sonleitner, Ray Anderson, Jay Vavra, Dave Roush, Dale Stout, Dell James, Jeff Kohl, Joy Cummings
 Call to order: 7:15 p.m. by Marv, President at Marv Houg's house

Show Report

- Dale reports that there may be a few bills that have not been submitted.
- Dale questioned whether University of Iowa had been completely reimbursed for the bone dig.
- Joy made motion to pay University of Iowa an additional \$100.00. Second by Jeff. All approved. Motion carried.
- General discussion about the scholarships and other awards we pay on an annual basis. Jay suggested that a percentage amount of our earnings be used for these purposes rather than a set amount. For example, this year's percentage paid out equals 66%. Agreement reached that we would table this discussion until further investigation. The by-laws would need to be reviewed.
- No other suggestions have been put forth for next year's show- Petrified wood/fossilized plants still being considered. Members will be encouraged to offer any other suggestions.

Auction

- Question of what kind of materials will be up for auction. Sharon suggested that we send out contracts and get a description of the items that will be offered at auction. Sharon will send out contracts. Advertising of those items will be easier and maybe draw more interested bidders.
- Estimate about a total of 1,200 lots for the two day auction.
- Dates for the Auction **September 19-20** in the Amanas.
- Marv will look into an advertisement for the Rock and Gem magazine.

Field trips

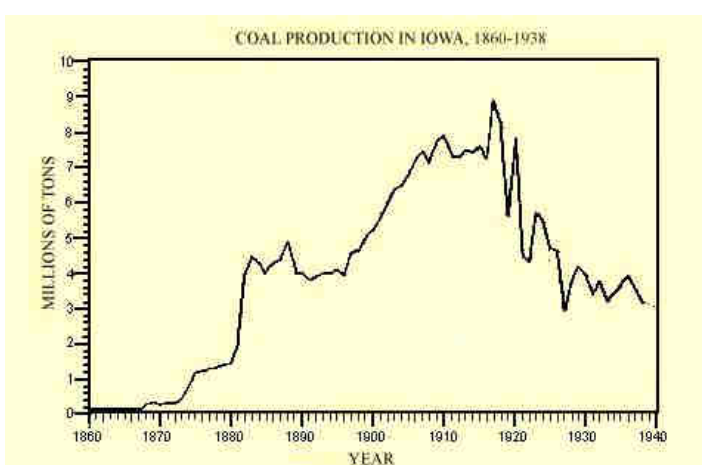
- Marv-Conklin Quarry will be on May 17. Two entry times, 9 a.m. or 12 noon. 60 people allowed and Marv has 20 signed up so far.
- Still looking into a geode dig and will contact Glenn.
- Sharon suggested that Mark Ginsberg, gemologist, may be an available speaker. Or perhaps a field trip to his place? Ray knows him and will talk to him to get suggestions and feedback.

Miscellaneous

- Discussion regarding the concerns expressed at last general meeting about the club providing more club activities rather than only awarding scholarships. General discussion ensued with the following ideas presented:
 - Wire wrap classes, lapidary classes, flint napping, fossil cleaning, cabbing, start up class with identification of equipment, etc., polishing stones?, rock identification? As a club we tend to forget that there are members who have various interests and not forgetting that we have gained new members.
 - This will be put forward at the next meeting and ask for more suggestions from the members.
- Summer picnic meetings will be June 16-Noelridge (lapidary), July 21 Geode cracking at Squaw Creek, August 18, Morgan Creek bingo. Marv and Dale will make arrangements. Pot luck picnics, bring your own set up. Usual eat about 6:30 pm.

Memorials: \$25.00 per remembrance to Wikkiup Hill. (Leslie Blin, Bob Blin, Michael Sincak, Marv Juhls, Helen Sullivan.)
 Motion made to adjourn by Dale, second by Dave.

Meeting adjourned 9:45 p.m..
 Respectfully submitted,
Dell James, Secretary



Iowa coal mining grew from 1870 to 1920. Mining declined for several reasons. Railroads began buying coal from other states. As a result, Iowa's mining industry competed with the national markets. Iowans began looking to other energy sources for home use such as electricity, natural gas and fuel oil. Source: UNI—Iowa History.

April Club Meeting Minutes

Call to order: 7:10 p.m. by Marv Houg, President.

Introduction of new members or guests-New members Debbie Rowray, Paul Robare, Brooke ?, Matt Burns, Orrin Ploche, Jim ?, Mike Blin, (secretary's apology for not being able to read the last names) Tom Foster and 3 geology students from the University of Iowa - Emily, Jake and James.

Minutes reviewed. Corrections to Board minutes made. Monthly meeting minutes motion to approve by Bill, second by AJ. Minutes approved.

Treasurer's report by Dale- Report filed. Checking Balance \$17,394.66. Report filed.

Monthly Program

Tom Foster of University of Iowa reviewed program for summer course that is required for Geology students. Emily, James and Jake all gave a review of their summer course. The scholarship money that the club contributes is used to defray expenses for this course (\$1100.00 per student tuition.).

Door Prize Winner-New member Debra Rowray.

Show report-Dale reviewed the financial report for the show. Some areas do not reflect final amount as expenses etc. have not been finalized. Dale has questions about the bone dig profits and will contact U of I for clarifications.

Marv thanked everyone for the excellent help and team spirit exhibited by all. There were many positive comments made to various club members from visitors and vendors. A successful show!

New Business

Motion to general membership from board recommendation to approve the following scholarship awards for 2015:

University of Iowa	\$3500.00
Cornell	\$2500.00
VAST	\$1500.00
Science Fair	\$200.00
Connections	\$100.00

Motion seconded by Bill Desmarais.

Discussion followed with concerns about using the extra funds for in-club type activities or equipment that may be needed versus increasing the amount being awarded.

Other opinions were expressed that if we had a good year, we

could share the wealth. These amounts indicate a total increase of \$1000 from 2014. The amounts are approved and voted upon annually and can be adjusted if we do not have the funds to disperse. Show of hands vote taken to approve of the amounts recommended. Ayes- 17, Nays-3. Motion passed.

Field Trips

May 17 at Conklin Quarry. Marv reviewed briefly the required equipment with directions to the club website for further instruction. Dale will email necessary information.

Geode hunt is a possibility. Marv will talk to Glenn Rocha.

Marv announced that "Mineralogical Records" will contain about 6 pictures of his specimens.

Anita shared that she went to Wikkiup Hill and saw that the club had a display case. All agreed that the club should update the case and emphasize Iowa rocks.

Tom spoke about the upcoming Midwest Federation show in Chicago. Marv asked if anyone wanted to attend as a representative of the club. No one volunteered. Anyone interested should contact Marv Hoag.

Motion to adjourn by AJ, second by Tom. Meeting adjourned at 8:50 p.m.

Respectfully submitted,
Dell James, Secretary

Visit Linn County's Hitaga Sand Ridge Prairie Preserve

Have you ever seen a cactus growing in the wild in Iowa? How about sand dunes or a glacial erratic that was deposited thousands of years ago during the last ice age?

These are a few of the features you can find at the Hitaga Sand Ridge Prairie Preserve in northern Linn County.

The area is located at the intersection of Hitaga Road and Wapsi Ridge Drive just northwest of Paris. It is one of the 28 areas owned and managed by the Linn County Conservation Department.

39th Annual CGMA

Chicagoland Gem & Minerals Association Show

Hosting the

Midwest Federation's

75th Anniversary

Fossils-Minerals-Beads-Gems-Jewelry
Meteorites-Prospectng-Kids Korner

DuPage County Fair Grounds

2015 Manchester Rd, Wheaton, IL 60187

MEMORIAL DAY WEEKEND

Saturday May 23, 2015

Sunday May 24, 2015

10 AM - 6 PM

10 AM - 5 PM

Wholesale Room

Wholesale Room

10AM - 6 PM

10AM - 3 PM

(WHOLESALE ROOM w/Current ID)

Adults - \$5.00 Seniors - \$3.00 Students - \$3.00

Under 13 -FREE Service Personnel w/ID- FREE



www.chicagolandgemshow.org 630-377-0197 CGMA@sbcglobal.net

Friday
May 22, 2015

10:00 a.m.
Lizzadro Museum
Free Admission

10:30 a.m.
Wheaton College
Home of the
Mastodon!
Special Tour
Free Admission

2:00 p.m.
Lizzadro Museum
Free Special Tour
1.5 to 2 hours
Free Admission

Saturday
May 23, 2015

10 a.m. to 5 p.m.
Lizzadro Museum
Admission \$5

2:00 p.m.
Wheaton College
Home of the
Mastodon!
Special Tour
Free Admission

7:00 p.m.
Awards' Banquet
Cooper's Corner
Winfield, IL

Sunday
May 24, 2015

8:00 a.m.
Editors' Breakfast
9:00 a.m.
Editors' Awards

2:00 p.m.
Lizzadro Museum
Free Special Tour
1.5 to 2 hours
Admission \$5

Spotlight Gemstone: Garnet



Garnets are a set of closely related minerals that form a group, resulting in gemstones in almost every color. Red garnets have a long history, but modern gem buyers can pick from a rich palette of garnet colors: greens, oranges, pinkish oranges, deeply saturated purplish reds, and even some blues.

Red garnet is one of the most common and widespread of gems, found in metamorphic rocks (which are rocks altered by heat and pressure) on every continent. But not all garnets are as abundant as the red ones. A green garnet, tsavorite, also occurs in metamorphic rocks, but it's rarer because it needs unusual rock chemistries and special conditions to form.

Rhodolite is a beautiful purple-red garnet. Garnets can even exhibit the color-change phenomenon similar to the rare gemstone alexandrite.

All garnets have essentially the same crystal structure, but they vary in chemical composition. There are more than twenty garnet categories, called species, but only five are commercially important as gems. Those five are pyrope, almandine (also called almandite), spessartine, grossular (grossularite), and andradite. A sixth, uvarovite, is a green garnet that usually occurs as crystals too small to cut. Many garnets are chemical mixtures of two or more garnet species.

Thousands of years ago, red garnet necklaces adorned the necks of Egypt's pharaohs. In ancient Rome, signet rings with carved garnets were used to stamp the wax that secured important documents. Centuries later, in Roman scholar Pliny's time (23 to 79 AD), red garnets were among the most widely traded gems. In the Middle Ages red garnet was favored by clergy and nobility.

Red garnet's availability increased with the discovery of the famous Bohemian garnet deposits in central Europe around 1500. This source became the nucleus of a regional jewelry industry that reached its peak in the late 1800s.

Edited from the Gem Institute of America website.

EVENTS

May 16-17: Wauwatosa, WI. Wisconsin Geological Society Annual Show. Sat & Sun 10 am - 5 pm Hart Park-Muellner Building, 7300 Chestnut St., Wauwatosa. Contact: Paul Schmidt, (414) 771-8668; pvs@wi.rr.com; www.wisgeologicalsociety.com

May 16-17: North Olmsted, OH. Parma Lapidary Club Annual Show. Sat & Sun 10 am - 5 pm. Soccer Sportsplex, 31515 Lorain Rd., North Olmsted Contact: Martha Lamparyk, (440) 926-3680; parmalapidary@yahoo.com; www.parmalapidary.com

May 23-24: Wheaton, IL—39th Annual Gem, Mineral, Fossil & Jewelry Show. Organized by: Chicagoland Gem & Mineral Association DuPage County Fairgrounds (2015 W. Manchester Road). See ad.

June 6-7: Springfield, MO - Annual show; hosted by OZARK MOUNTAIN GEM & MINERAL SOCIETY, Outdoors at Missouri Institute of Natural Science; 2327 W Farm Road #190; Sat. 10:00 a.m.-5:30 p.m., Sun. 10:00 a.m.-4:00 p.m.; FREE ROCK SWAP & GEM FAIR; Rocks, Fossils, Minerals, Rough, Slabs, Cabs, AUCTION Sat 5:30; Email: omgms.57@gmail.com; Phone 417-882-8449; contact Larry Lillich, PO Box 35, 2131 W Republic Road, Springfield, MO 65807, (417) 882-8449; e-mail: omgms.57@gmail.com

June 6-7: Viroqua, WI Annual show; Coulee Rock Club, Junior High School Gymnasium; 100 Blackhawk Drive; Sat. 10 am-5 pm, Sun. 10 am-4 pm; Admission is Free!; Annual show. Silent auctions. Contact Alison Alison, Viroqua, WI, (507) 895-8109; e-mail: rockinbabe@acegroup.cc

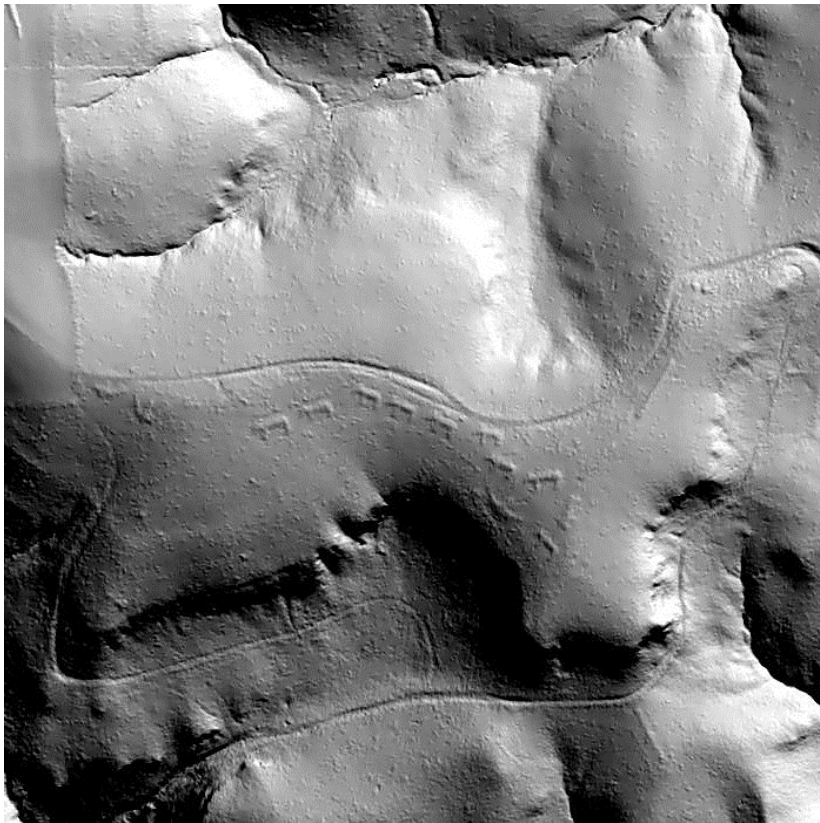
June 16: CVRMS Picnic—Noelridge Park, Cedar Rapids, Iowa—lapidary. Pot luck picnics, bring your own set up. Usual eat about 6:30 pm.

July 21: CVRMS picnic—Squaw Creek, Cedar Rapids, Iowa—geode cracking. Pot luck picnics, bring your own set up. Usual eat about 6:30 pm.

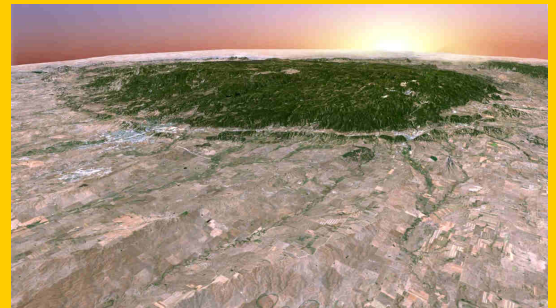
August 18: CVRMS picnic—Morgan Creek, Cedar Rapids, Iowa—bingo. Pot luck picnics, bring your own set up. Usual eat about 6:30 pm.

August 21-23: South Bend, Indiana. 52nd Annual Jewelry, Gem, and Mineral Show and Sale Organized by: Michiana Gem and Mineral Society St. Joseph County 4-H Fairgrounds - Esther Singer Building (5177 South Ironwood Road)

What in the World?



← What is the name of the landform in this LiDAR radar image of a feature in Iowa?
Read the answer in next month's Cedar Valley Gems newsletter.



April's image: While working as a student intern at the Earth Resources Observation and Science (EROS) Center, Mark Fersdal created this west-looking perspective of the Black Hills in South Dakota by mosaicking four NASA Landsat satellite scenes of the Hills.

<http://triggerpit.com/2011/02/01/earth-satellite-photos-turned-into-fantastic-art/>

Let ALAA Know If You Encounter Access Problems to Public Lands

American Lands Access Association has been blessed with members and FRIENDS who have rallied to our side...it doesn't get any better than that.

There are still numerous problems involving rockhounding access cropping up all over the country and we need your help to identify them, so please notify ALAA and get involved.

Together we can try to do something to preserve our access to rockhounding hunting sites. Nothing is better than having people in the local area take the lead on publicizing road closures, sites closures, etc.

These are the people close to the problems, and sometimes that person is YOU.

YOU ARE NOT ALONE, so let ALAA know how we can help and support you. We are all volunteers, some with lots of time to work to solve problems and others with limited time, but you all are a part of this vast puzzle and we need you.
Contact: info@amlands.org



Article by Shirley Leeson, ALAA President
president@amlands.org

—Excerpted from ALAA Newsletter (Jan.-Mar., 2015).
ALAA is the lobbying arm of the American Federation, working on behalf of rockhounds to keep public lands open and accessible to all, including the elderly and handicapped.

ASK A GEOLOGIST

by Ray Anderson, CVRMS Vice President

Where is Iowa's Largest Erratic Boulder Located?

Ask a Geologist is a monthly column that gives CVRMS members an opportunity to learn more about a geologic topic. If you have a question that you would like addressed, please send it to rockdoc.anderson@gmail.com, and every month I will answer one in this column. Please let me know if you would like me to identify you with the question. I will also try to respond to all email requests with answers to your questions, regardless of if it is chosen for the column.

Rona Bradshaw asked "I learned in geology class that the big boulders that I see here and there around Iowa are glacial erratics. Where is the biggest one??"

Glacial erratics are rocks that have been moved from their points of origin to new locations by glacial ice. Many large erratics can be found in Iowa, some weighing tens of tons. All of the largest erratics that have been moved any significant distance are igneous or metamorphic rocks that have come from the area where these rocks are exposed in central Minnesota and points north.

Granites make up the majority of these rocks, and a study by Dirks and Busch (1969) identified the area around St. Cloud, Minnesota, as the source region for most of these rocks.

Most of these glacial giants are fairly well rounded, and were apparently rounded when they were picked up by the glaciers. It is hard to imagine a glacial process that would round these huge rocks, but granite boulders are frequently rounded by the erosional and weathering processes that free them from the bedrock. Such large rounded boulders can be seen in their source areas in places like Elephant Rocks State Park in Missouri and Joshua Tree National Park in California.

There are many huge glacial erratics scattered throughout Iowa, but they are most commonly seen at the surface in the northeastern quadrant of the state where they have been exposed by sheet erosion on the Iowa Surface. Large erratics can be seen just east of the town of Allison in Butler County, in the park in Nora Springs in Floyd County, and near Wyoming in Jones County, but the largest known



Iowa's largest-known glacial erratic boulder is located 3½ miles southwest of Nashua.

erratic in Iowa can be seen about 3½ miles southwest of Nashua in Chickasaw County, in a farm field about ¾ miles south of highway 346.

This erratic measured 40' long x 30' wide x 12' high above the ground, and who knows how much lies below the ground level. This boulder is a porphyritic granite characterized by 55% pink feldspars and weighs an estimated 2,000 tons! Glacial ice transported the rock about 200 miles from its St. Cloud point of origin.

WEBSITE OF THE MONTH

thefossilforum.com

The Fossil Forum is a venue for the sharing of a common interest in fossils. The site's main focus is the forum broken down by topic, location and other criteria. There are also other helpful sections including a healthy gallery section of fossil photos, a listing of active fossil related blogs, calendar, links and live chat between registered members. Use it to help identify your latest trilobite find with other enthusiasts.



The Fossil Forum

Officers, Directors, and Committee Chairs

President	Marv Houg (m_houg@yahoo.com)	364-2868
Vice President. . .	Ray Anderson (rockdoc.anderson@gmail.com)	337-2798
Treasurer.....	Dale Stout (dhstout55@aol.com)	365-7798
Secretary.....	Dell James (cycladelics@netins.net).....	446-7591
Editor.....	Dave Chase (djchase@infionline.net)	360-9367
Liaison	Joy Cummings	981-2482
Imm. Past Pres. .	Sharon Sonneitner (sonnb@aol.com)	396-4016
Director '15	Jeff Kahl	455-2201
Director '16	Dave Roush (daroush1@gmail.com)	363-7842
Director '17	Jay Vavra (pending)	pending
Sunshine	Dolores Slade (doloresslade@aol.com).....	351-5559
Hospitality	Jeff Kahl	455-2201
Webmaster	Sharon Sonneitner (sonnb@aol.com)	396-4016

Club meetings are held the 3rd Tuesday of each month from September through November and from January through May at 7:00 p.m. at the Rockwell Collins 35th Street Plant Cafeteria, 855 35th St NE, Cedar Rapids, Iowa. The December meeting is a Christmas dinner held on the usual meeting night. June, July, and August meetings are potlucks held at 6:30 p.m. at area parks on the 3rd Tuesday of each month.

CEDAR VALLEY ROCKS & MINERAL SOCIETY

CVRMS was organized for the purpose of studying the sciences of mineralogy, geology, and paleontology and the arts of lapidary and gemology. We are members of the Midwest (MWF) and American (AFMS) Federations. Membership is open to anyone who professes an interest in rocks and minerals.

Annual dues are \$15.00 per family per calendar year. Dues can be sent to:

**Dale Stout
2237 Meadowbrook Dr. SE
Cedar Rapids, IA 52403**

CVRMS website:
cedarvalleyrockclub.org

May Meeting:
Rockwell Collins 35th St. Cafeteria
MAY 19 @ 7 P.M.
Program: Ray Anderson - "The rocks,
minerals, and fossils of the Grotto of the
Redemption, West Bend, Iowa"



David Chase, Editor
2077 Sunland Dr SE
Cedar Rapids, IA 52403